

# Public Document Pack



Chairman and Members of the  
Development Management  
Committee

Your contact: Peter Mannings  
Extn: 2174  
Date: 15 July 2020

cc. All other recipients of the  
Development Management  
Committee agenda

Dear Councillor,

## **DEVELOPMENT MANAGEMENT COMMITTEE - 15 JULY 2020**

Please find attached the Additional Representations Summary, I have been asked to circulate this by the Head of Planning and Building Control prior to the meeting this evening.

Yours faithfully,

Peter Mannings  
Democratic Services Officer  
East Hertfordshire District Council  
[peter.mannings@eastherts.gov.uk](mailto:peter.mannings@eastherts.gov.uk)

**MEETING** : DEVELOPMENT MANAGEMENT COMMITTEE  
**VENUE** : PLEASE NOTE THAT THIS MEETING WILL BE HELD  
VIRTUALLY ON ZOOM  
**DATE** : WEDNESDAY 15 JULY 2020  
**TIME** : 7.00 PM

This page is intentionally left blank

## East Herts Council: Development Management Committee

**Date: 15<sup>th</sup> July 2020**

**Summary of additional representations received after completion of reports submitted to the committee, but received by 5pm on the date of the meeting.**

Agenda No	Summary of representations	Officer comments
<b>5a, 3/19/2626/FUL Western Neighbourhood Local Centre</b>	A representation in support of the proposal has been circulated to Members by the applicant Frontier Estates Ltd. (attached)	
<b>5b, 3/20/0413/FUL Leventhorpe School, Cambridge Road, Sawbridgeworth</b>	A neighbour objection has been received with the following comment:  ‘I wasn’t told by anyone there would be building work behind my house at The Leventhorpe School. From what I can see online of this, this is single storey and I am looking at a two storey building from my bedroom window. As an NHS nurse working night shifts I am very upset by this.’	The drawings submitted and available online show the proposals which include the installation of two storey temporary classrooms.
<b>5b, 3/20/0413/FUL Leventhorpe School, Cambridge Road, Sawbridgeworth</b>	A neighbour objection received during the course of the application and reported within the officer report has been withdraw.	An email has been received requesting that the objection is withdrawn.

This page is intentionally left blank

# Proposed Western Neighbourhood Local Centre, Bishop's Stortford North

## Update for EHDC Planning Committee Members



### Dear Member,

Frontier Estates Ltd. are extremely pleased to bring forward the Western Neighbourhood Local Centre at Bishop's Stortford North. From the outset, our overarching vision has been to deliver an exciting and vibrant Local Centre. Since November 2018, we have worked with EHDC and intended operators to shape a Local Centre which has a strong identity. We commend this application to you for consideration at the Planning Committee meeting on the 15th July 2020.



### Planning Benefits

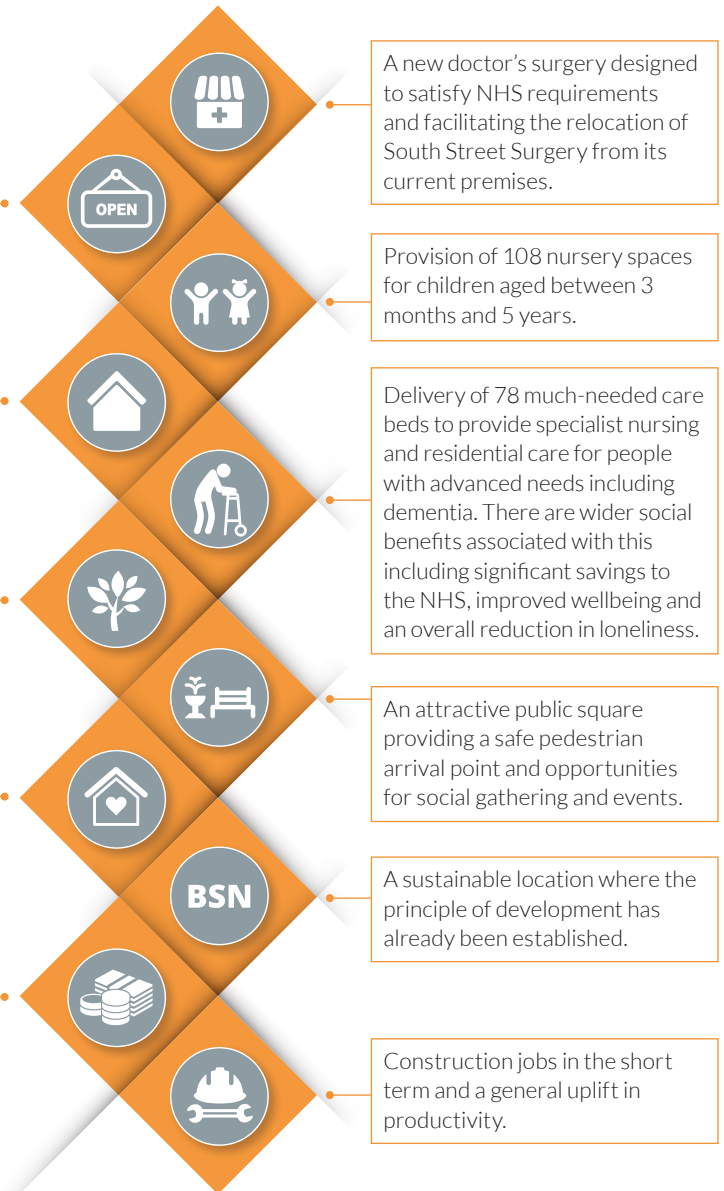
Delivery of flexible commercial floorspace to accommodate a range of uses appropriate for a local centre and potentially including shops, banks, cafes, restaurants, pubs, dry cleaners, pharmacies, gyms, hairdressers, beauty salons, community centres, day centres and libraries.

Provision of 100% affordable housing in the form of 29 much-needed 1 and 2 bedroom apartments.

Provision of high-quality landscaping throughout and associated biodiversity enhancements.

Provision of a high quality and attractive design which complements development on the wider site.

Circa 155 long term employment opportunities across the care home, doctor's surgery and nursery in a range of roles. Further opportunities will also arise as the flexible commercial uses become occupied.



This page is intentionally left blank